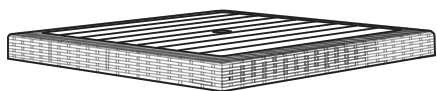


Diagram illustrating assembly instructions and safety warnings:

- Warning 1:** A crossed-out power drill icon indicates that a power drill should not be used for assembly. To the right is a clock icon with the number **5'** below it, indicating a 5-minute assembly time.
- Warning 2:** A crossed-out warning triangle icon is positioned above a diagram showing a block being placed on a surface. To the right is a person icon with the number **1** below it, indicating that one person is required for assembly.

A



x 1

B

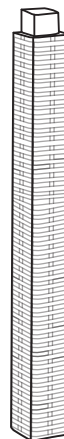
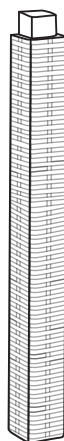
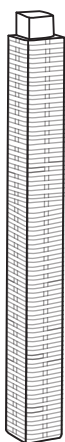
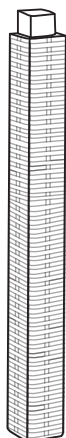


x 4

A



B x 4



1

