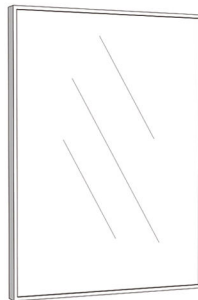



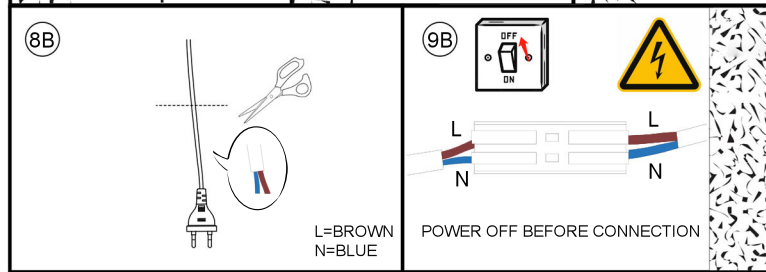
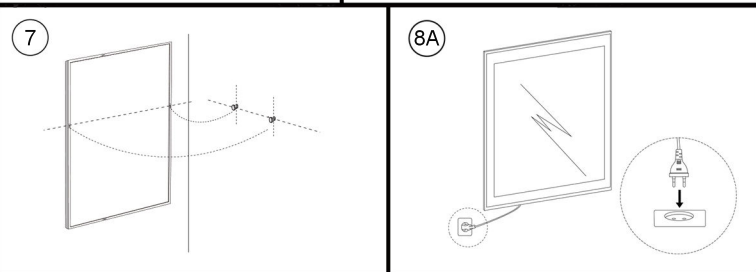
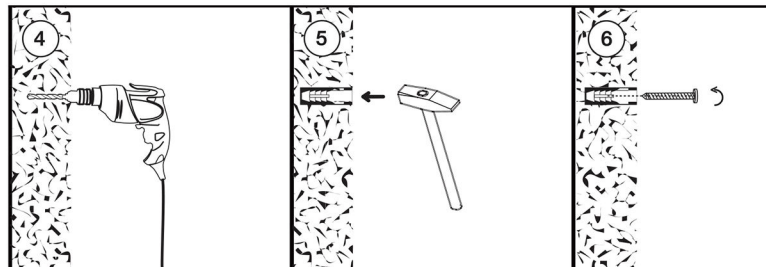
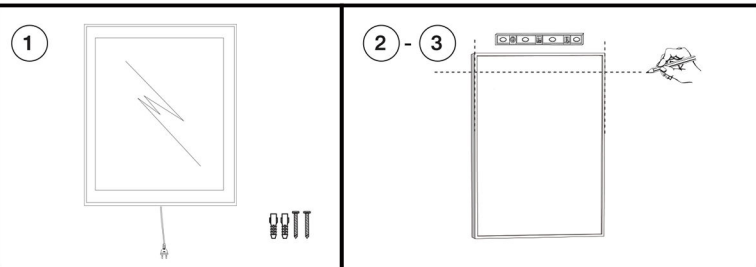


[pro.tec]

Assembly Instruction
Item Number : PXSP-0111
V1.0



| | |
|---|---|
|  | 2 |
|  | 2 |
|  | 1 |



Operating Instructions

Key 1: Point - press - Defog-Switch on/off



Key 2: Point - press - Light on/off; Long-press - Infinity Brightness Dimmer (10% - 100%)



Key 3: Point - press - Touch both buttons together (Light & Defog-Switch), touch defog-switch to control the hour, when the hour is set, touch the light-switch; Use the same way to touch the defog-switch to control the minute, touch the light-switch at the end to complete the process.



When the power is turned off and then restarted, it will return to the previous state of use.

Installation Procedure

Before starting your installation, please make sure:

- The wall surface must be of suitable strength and construction.
 - The main electricity supply has been powered off.
1. Measure the distance (X) between the key-hole centers on the back of the mirror.
 2. Draw a horizontal line on the wall according to the height at which you want to hang the mirror and mark the hole positions on the wall with a pencil, using the dimension (X) taken from step 1.
 3. Drill the hole with a percussion drill, using the hole positions from step 2. Ensure that the hole positions are horizontal.
 4. Use a hammer to nail the expansion bolt plug into the hole and keep it level with the wall.
Note: The expansion bolt plugs supplied are only suitable for solid stone/brick walls. For any other wall types, please go to the store to buy the correct plugs and screws after checking.
 5. Use a screwdriver to tighten the screw into the expansion bolt, leaving approximately 5-10mm of the screw standing proud of the wall.

6. The next step is to make the electrical connection from the mirror to the mains supply. Follow the **ELECTRIC CONNECTIONS GUIDE**.
7. Hang the mirror onto the screws fitted to the wall. Ensure the mirror is securely mounted. To remove the mirror, first lift it and then pull it away from the wall.

Installing Mirror to Wall

Please follow the instructions below before you install the mirror on the wall.

ALL WIRING SHOULD BE DONE BY A QUALIFIED LICENSED ELECTRICIAN.

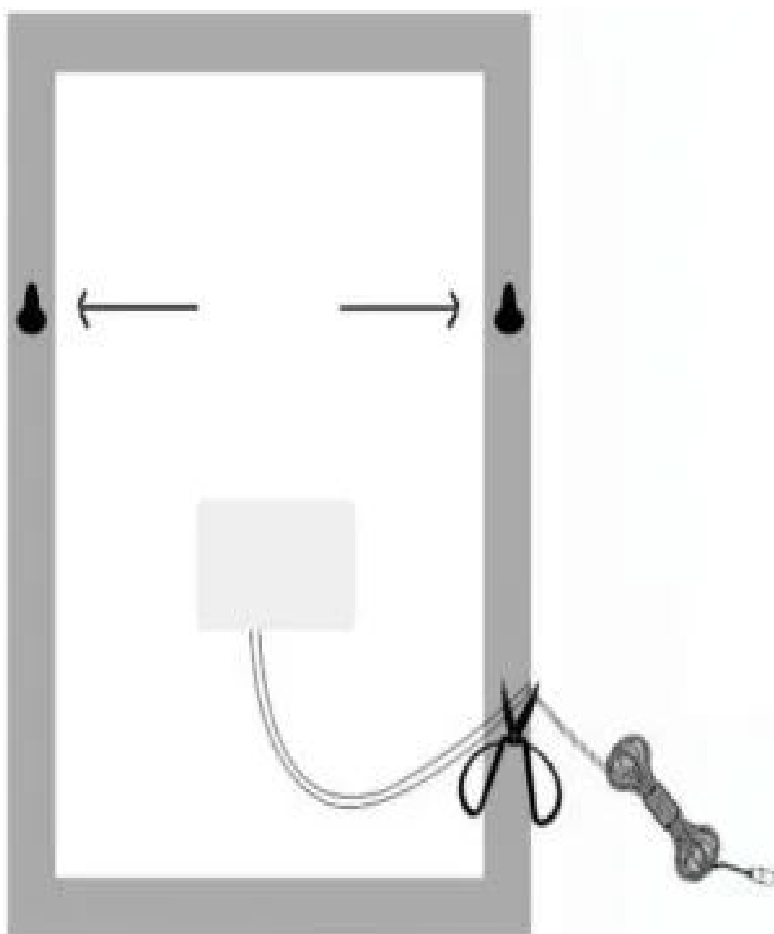
WARNING: Shut off power before wiring the mirror.

WARNING: An electrical option mirror must be wired to a 20 Amp GFI (Ground Fault Interrupter) protected circuit when used in bathrooms and all other locations required by the National Electric Code.

CAUTION: Requires 120 VAC 20 Amp GFI protected circuit.

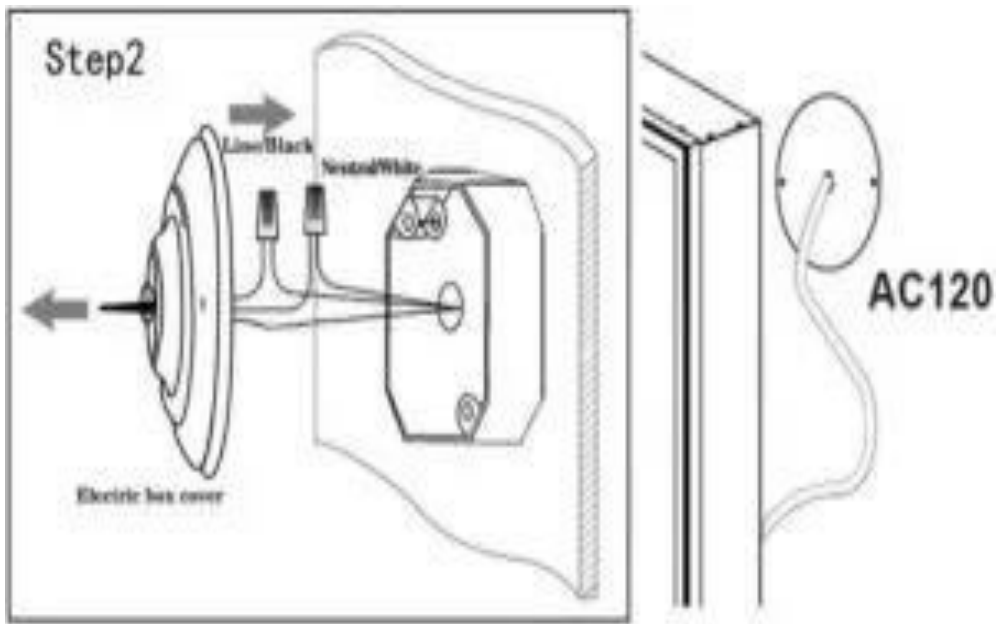
Step 1

Measure the wire and cut off any redundant length, leaving the wire length you need.



Electric wiring: Be sure to leave enough wire to make the proper and safe connection to the Field/Power.

Step 2



1. Peel off the wire.

2. Rotate to tighten.



3. Twist the wire.

4. Pull and check.



Step 3

Follow the installation process (5) to install the mirror on a wall.

GROUNDING INSTRUCTIONS

This product must be connected to a grounded metal, permanent wiring system, or an equipment grounding conductor must be run with the circuit conductors and connected to the equipment grounding terminal or lead on the product.

WARNING: Risk of Electric Shock, Fire, and Injury. Review the assembly instructions to confirm that the appropriate critical components and accessories are being used with the mirror. Children or people with cognitive disabilities are not anticipated to be present or, if present, closely supervised.

IMPORTANT SAFETY INSTRUCTIONS

When using this mirror, basic precautions should always be followed, including the following: Read all instructions before using.

DANGER: To reduce the risk of electric shock, always unplug this furnishing from the electrical outlet before cleaning or servicing.

WARNING: To reduce the risk of burns, fire, electric shock, or injury to persons:

1. Disconnect from the outlet before putting on or taking off parts.
2. Close supervision is necessary when this mirror is used by, or near children, invalids, or disabled persons.
3. Use this mirror only for its intended use as described in these instructions. Do not use attachments not recommended by the manufacturer.
4. Never operate this mirror if it has a damaged cord, if it is not working properly, if it has been dropped or damaged, or if it has been dropped into water. Return the mirror to a service center for examination and repair.
5. Keep the cord away from heated surfaces.
6. Never operate the mirror with the air openings blocked. Keep the air openings free of lint, hair, and the like.
7. Never drop or insert any object into any opening.
8. **DO NOT** use outdoors.
9. **DO NOT** operate where aerosol (spray) products are being used or where oxygen is being administered.
10. To disconnect, turn all controls to the off position, then disconnect from the outlet.
11. For grounded products, the following statement:
WARNING: Risk of Electric Shock – Connect this mirror to a properly grounded outlet only. See Grounding Instructions.
12. Mount the mirror at the correct height.