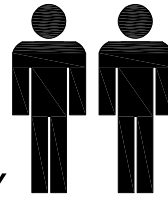


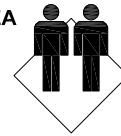
MODEL NAME:

ET 4417-00

1.0hr



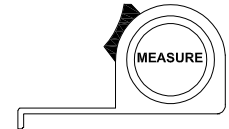
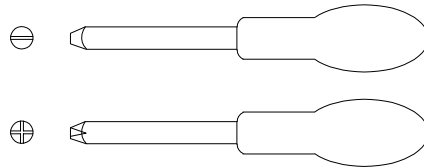
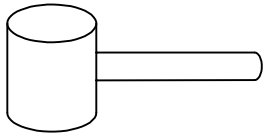
FLOOR AREA
2.1M X 1.0M



APPROXIMATE ASSEMBLY TIME

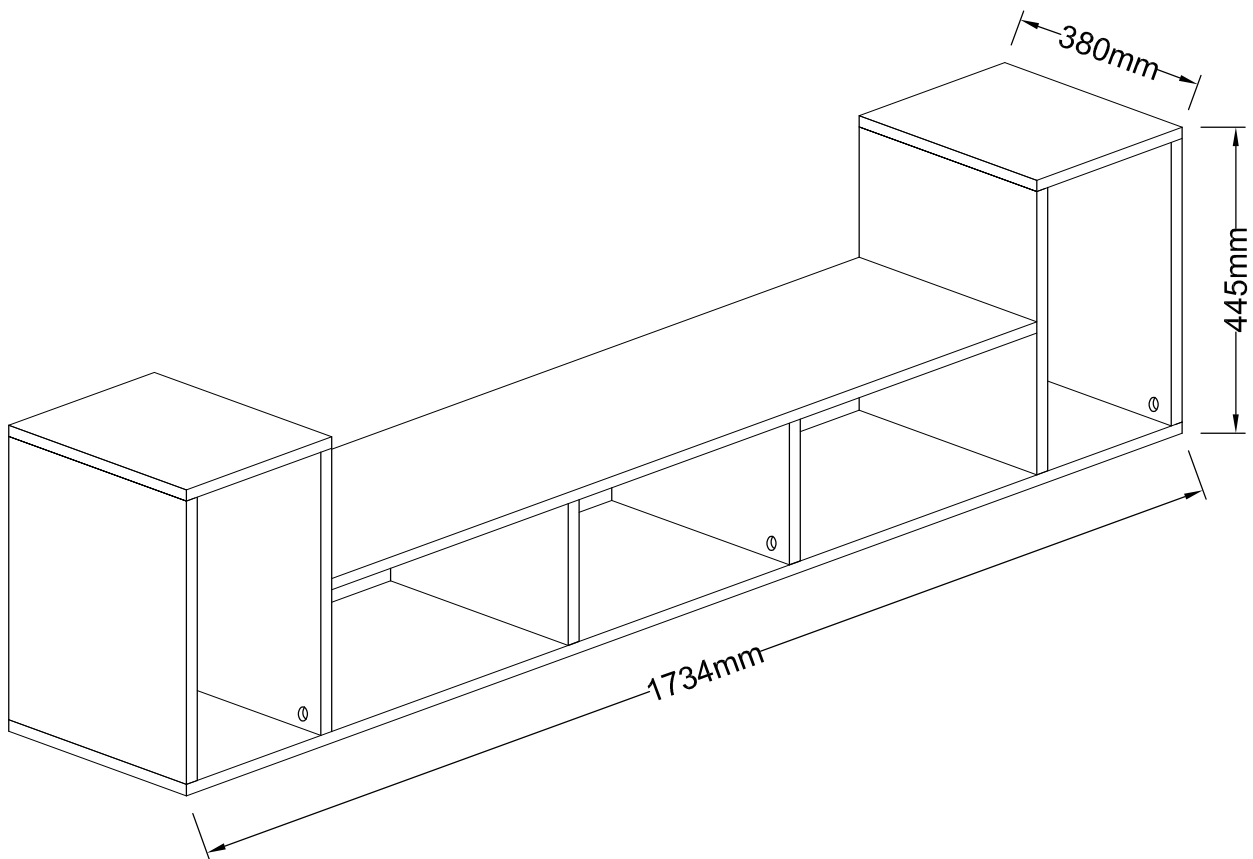
2 PERSON OF ASSEMBLY

REQUIRED ASSEMBLY SPACE



REQUIRED ASSEMBLY TOOLS

ASSEMBLED DIMENSIONS



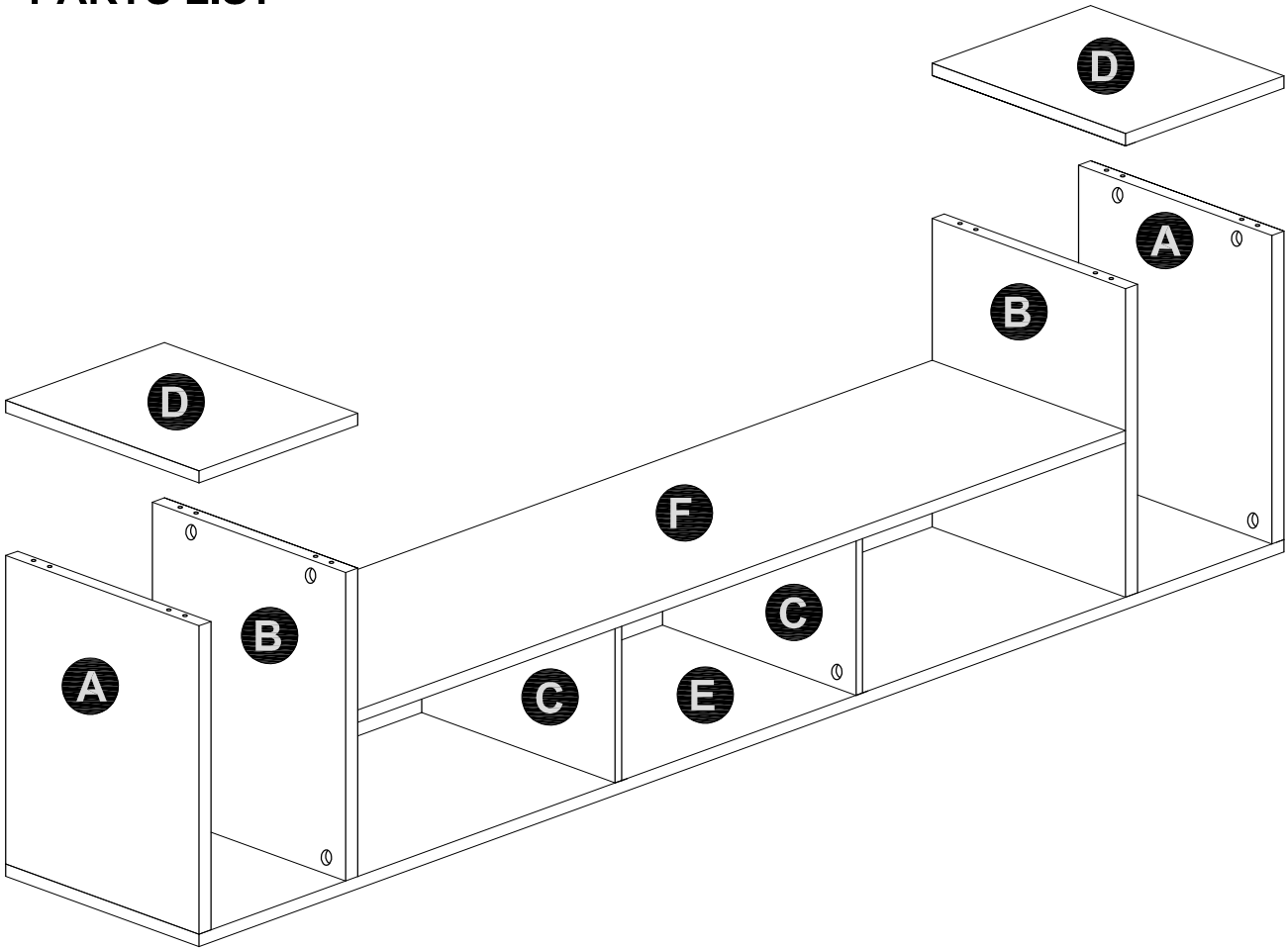
NOTE : THE MAXIMUM WEIGHT THIS PRODUCT CAN HOLD UP TO 25 KGS.

MODEL NAME:

ET 4417-00

NO.	PART LIST	QTY
(A)	SIDE PANEL- LEFT&RIGHT	2
(B)	CENTRE PANEL- LEFT&RIGHT	2
(C)	CENTRE DIVIDER	2
(D)	TOP PANEL	2
(E)	BOTTOM PANEL	1
(F)	CENTRE PANEL	1

PARTS LIST



MODEL NAME:

ET 4417-00

HARDWARE LIST

4cm
3cm
2cm
1cm
0cm

28X
Dia.6 x 30mm
1
WOOD
DOWEL

28X
Dia.15mm
12mm
2
LARGE
CAMLOCK

28X
M6.5
3
QUICKFIT

2X
4
GLUE 10CC

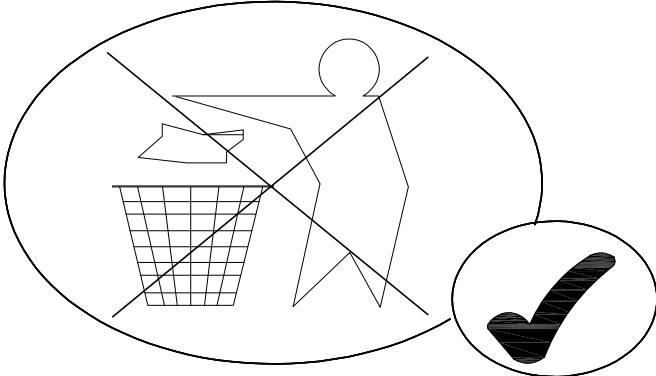
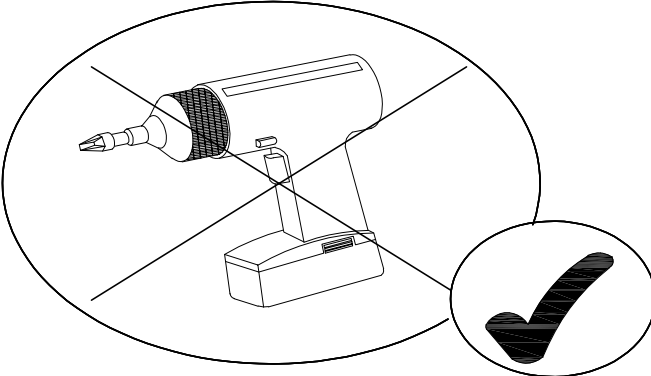
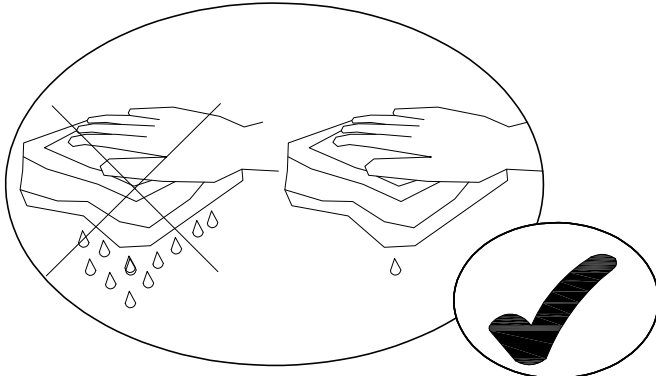
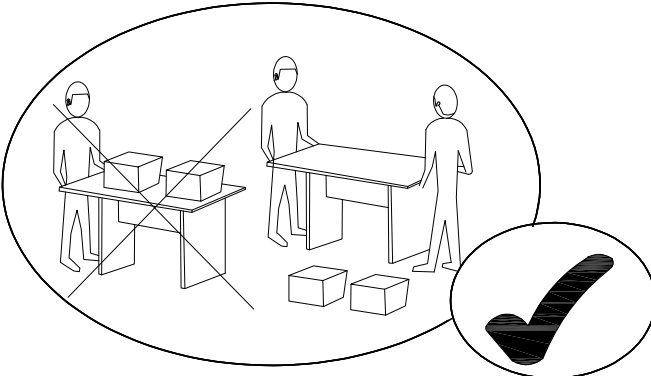
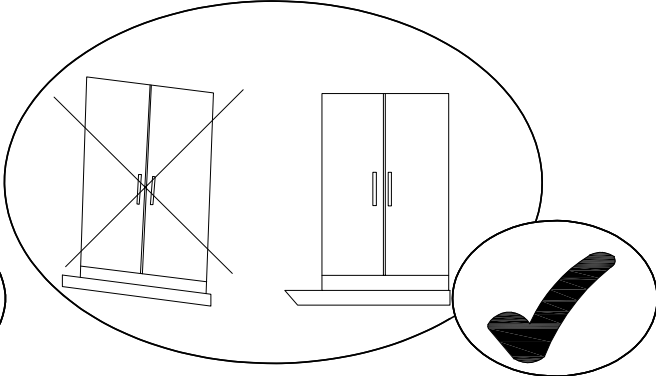
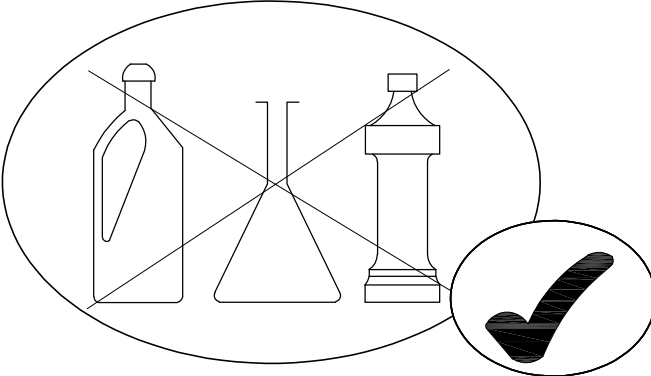
16X
Dia 15mm
5
CAMLOCK COVER
(OPTIONAL)

8X
Dia 17mm
6
CAMLOCK COVER
(OPTIONAL)

8X
7
LEG
COVER

MODEL NAME:

ET 4417-00

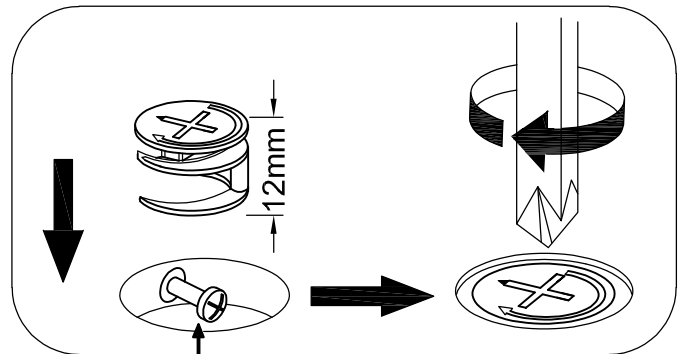
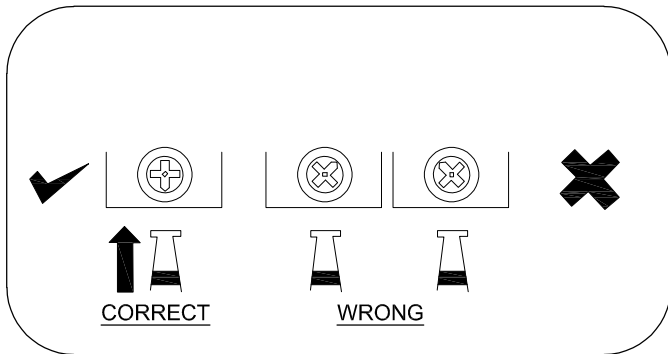
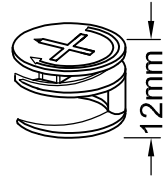


MODEL NAME:

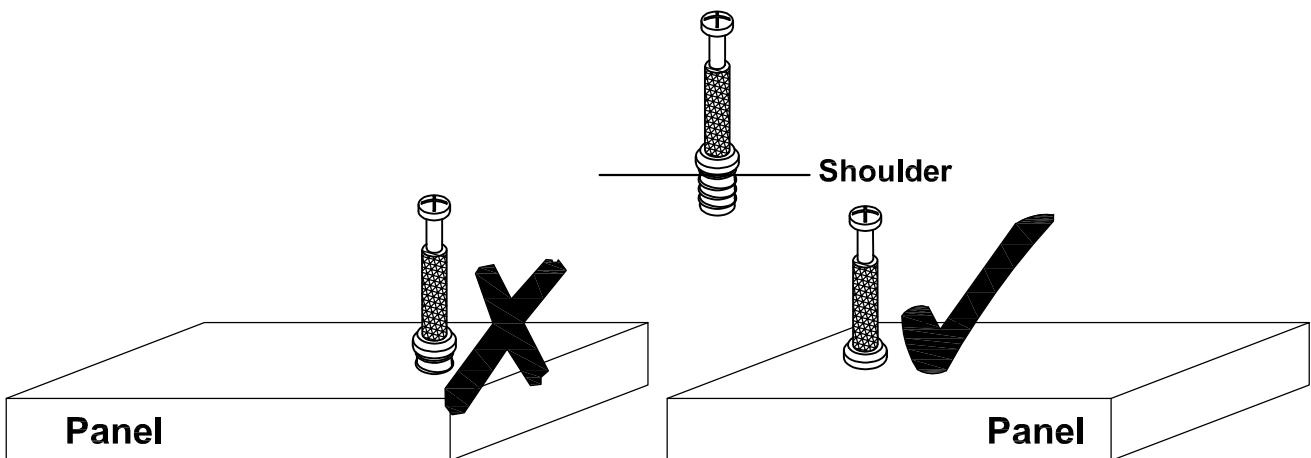
ET 4417-00

SPECIAL TIPS FOR FITTING CAM-LOCKS AND QUICKFIT

LARGE
CAM-LOCK



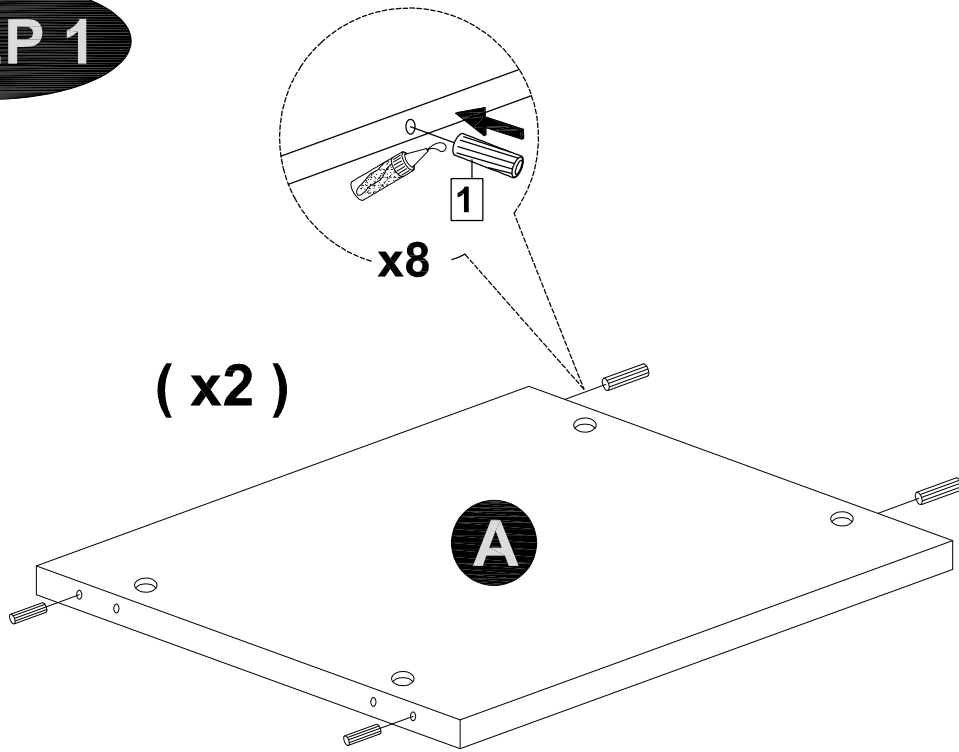
Quickfit head needs to be in centre



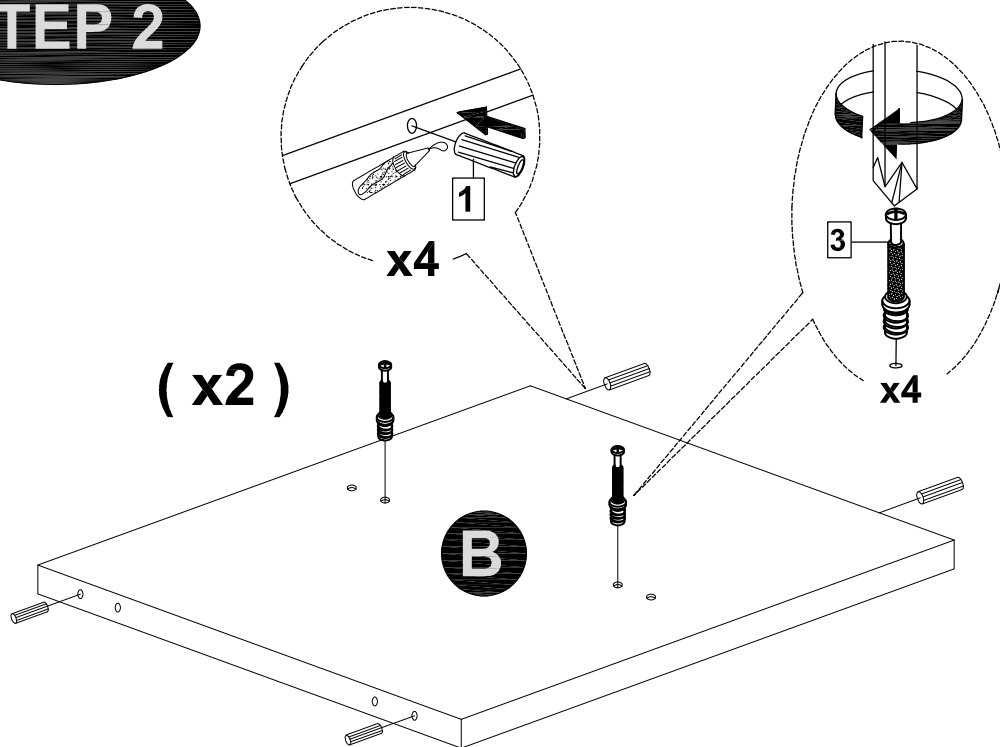
MODEL NAME:

ET 4417-00

STEP 1



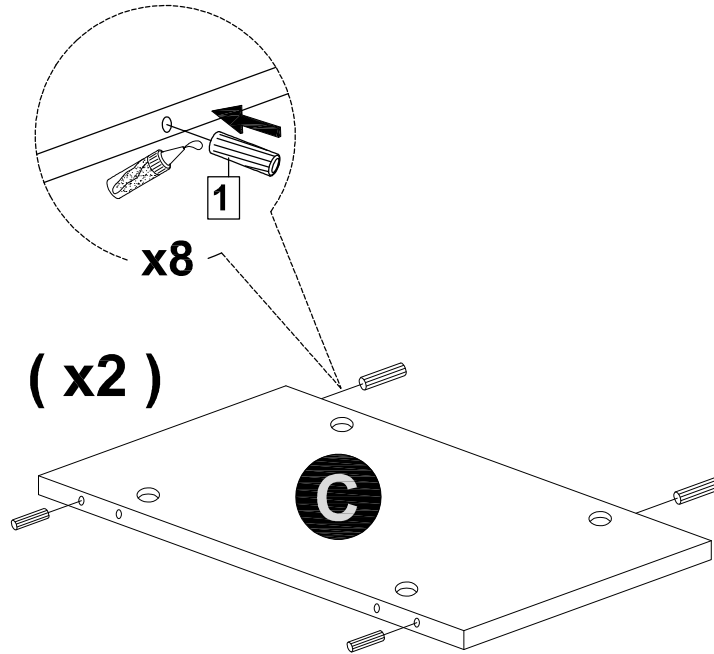
STEP 2



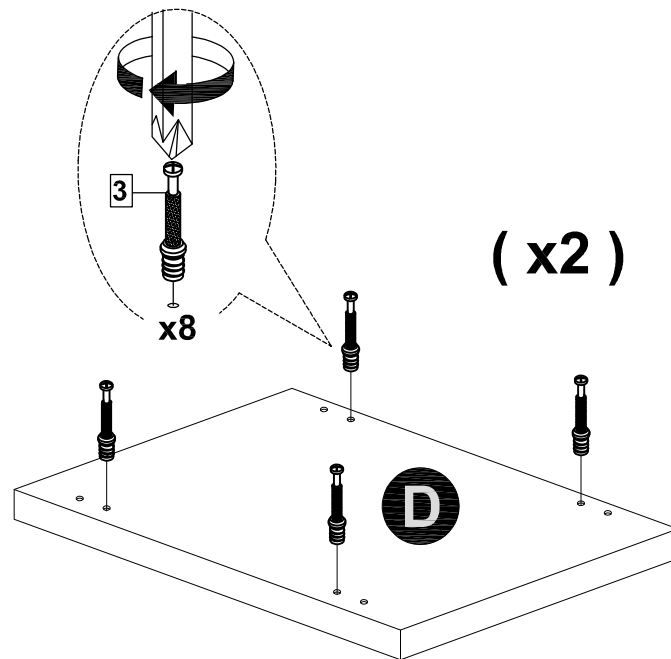
MODEL NAME:

ET 4417-00

STEP 3



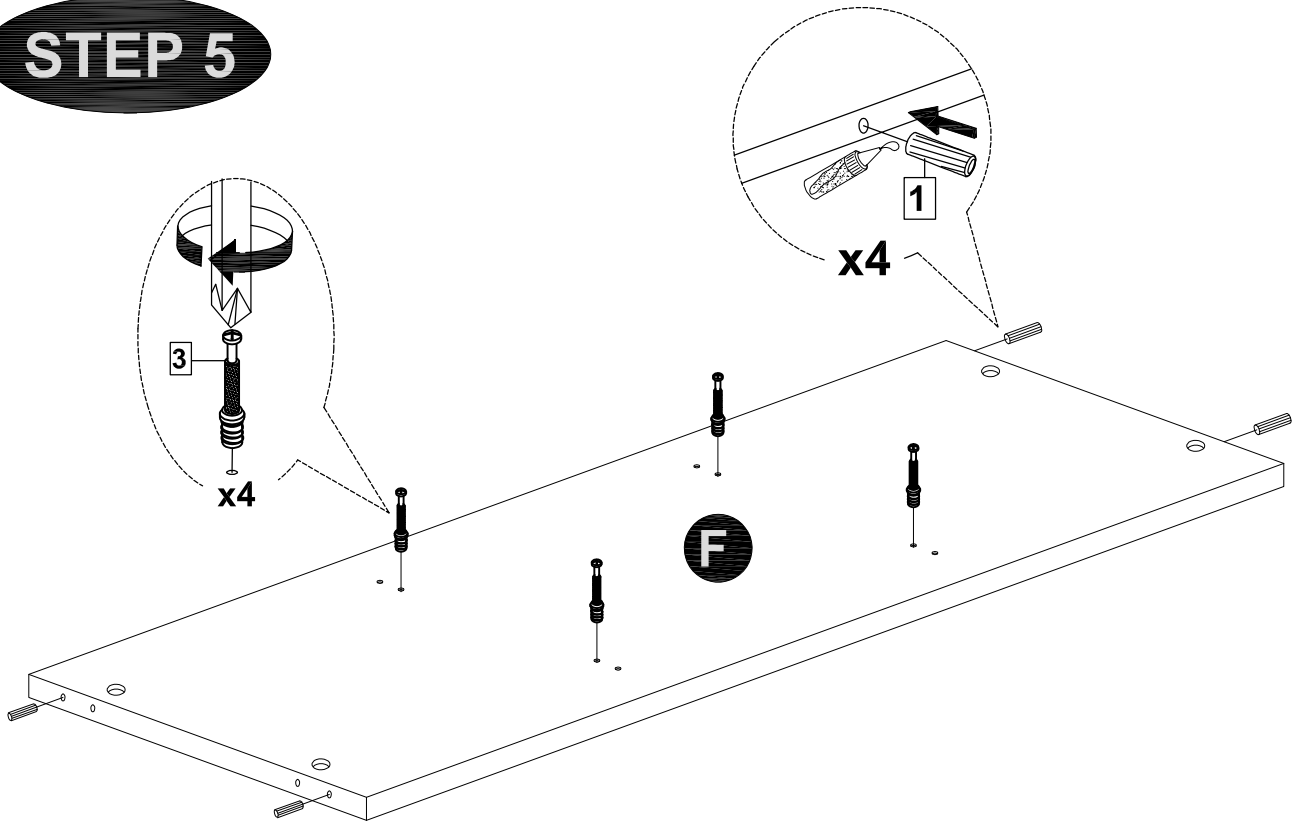
STEP 4



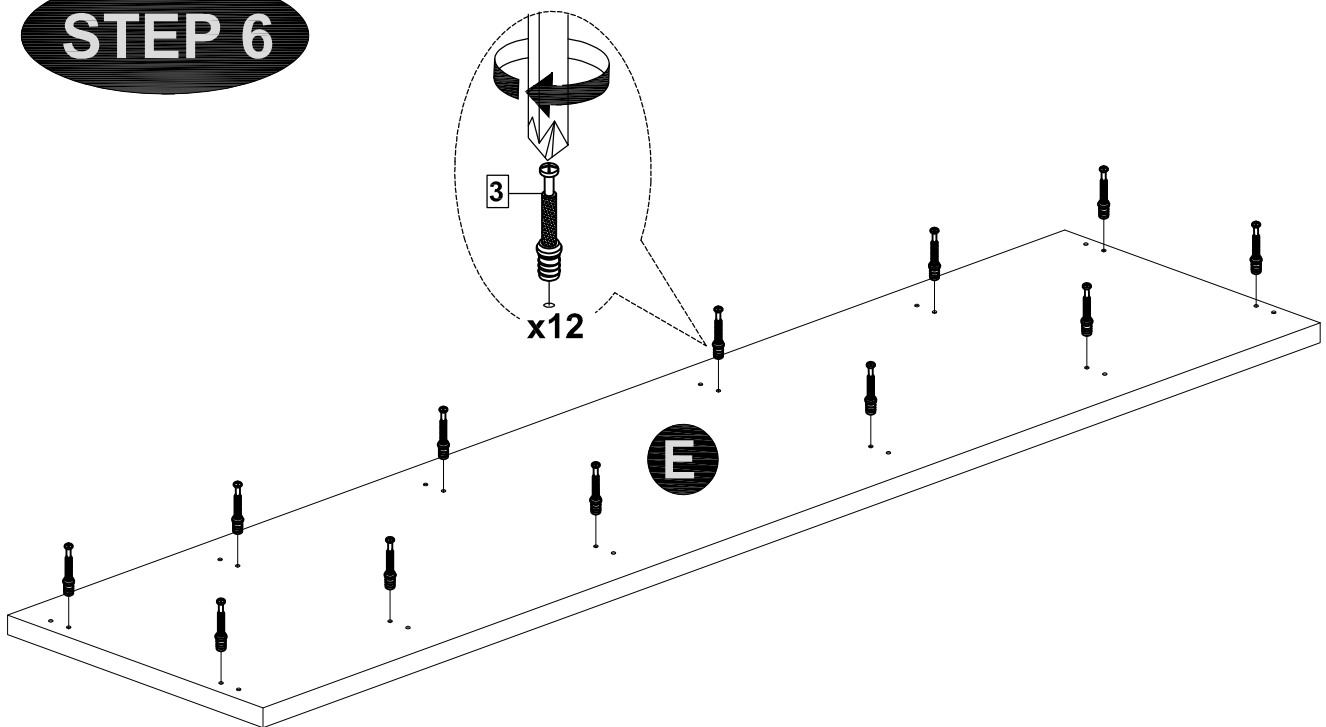
MODEL NAME:

ET 4417-00

STEP 5



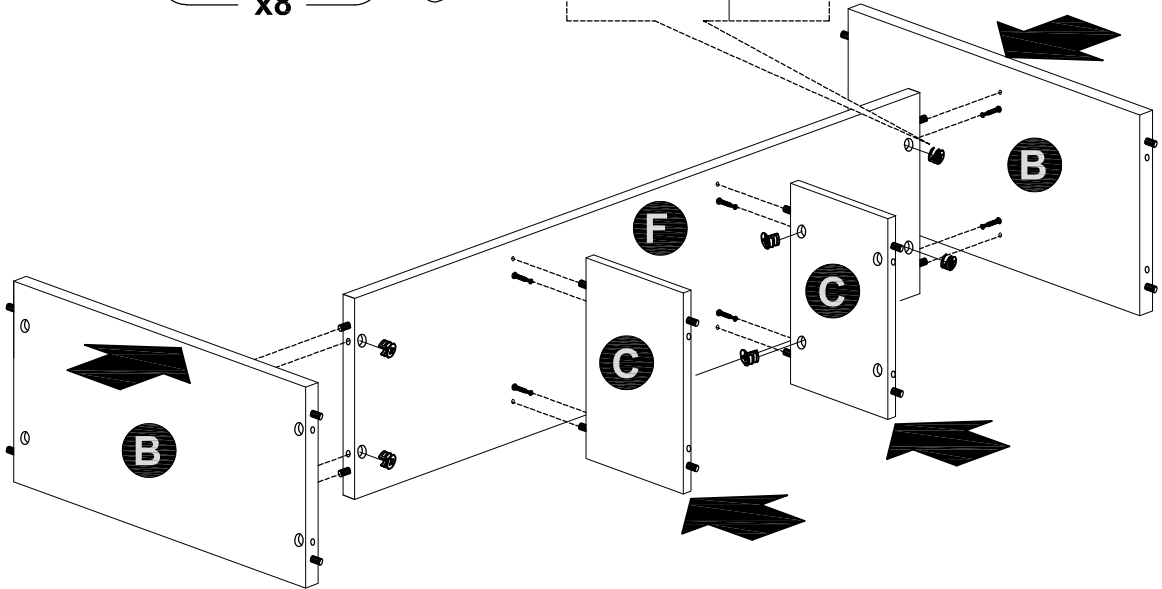
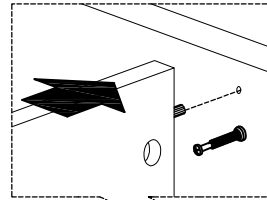
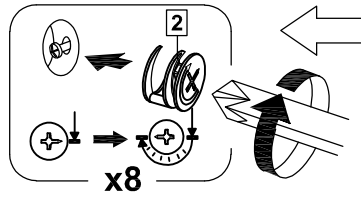
STEP 6



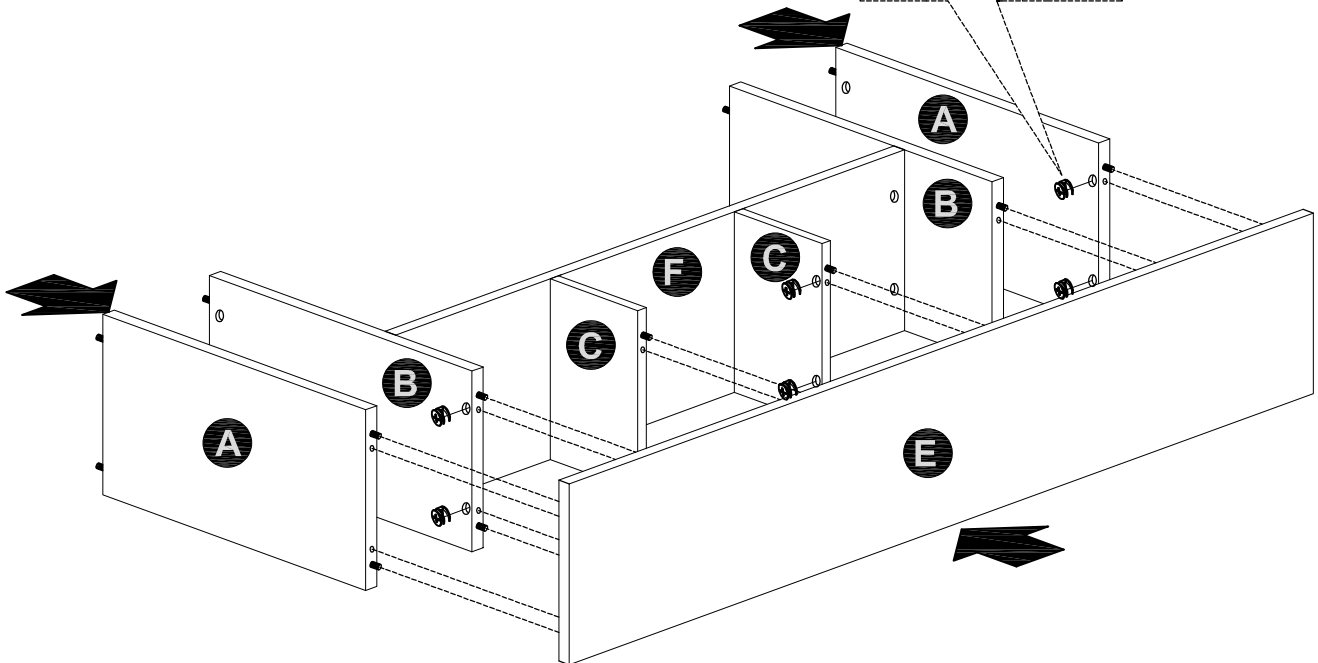
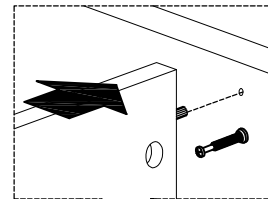
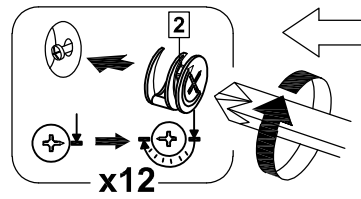
MODEL NAME:

ET 4417-00

STEP 7



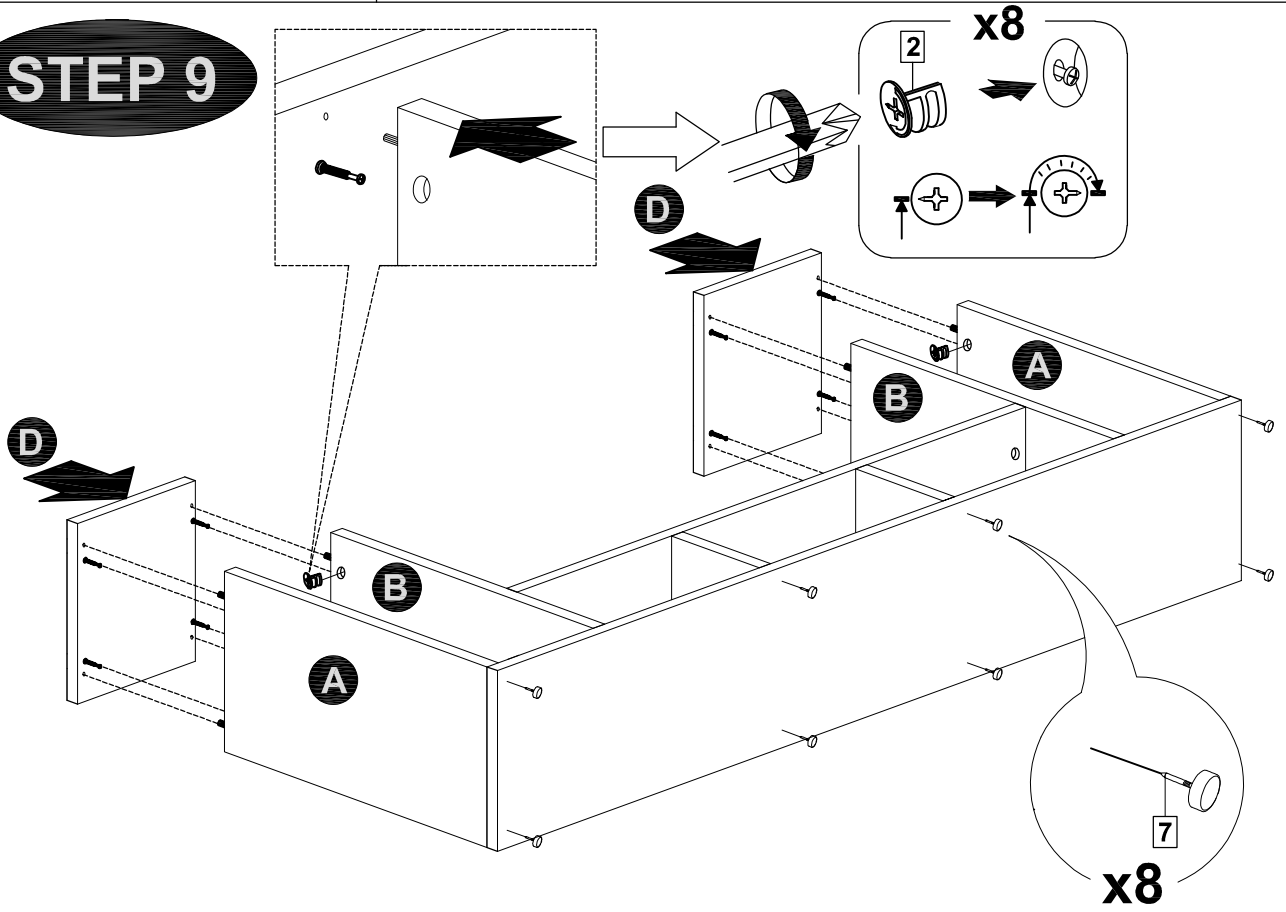
STEP 8



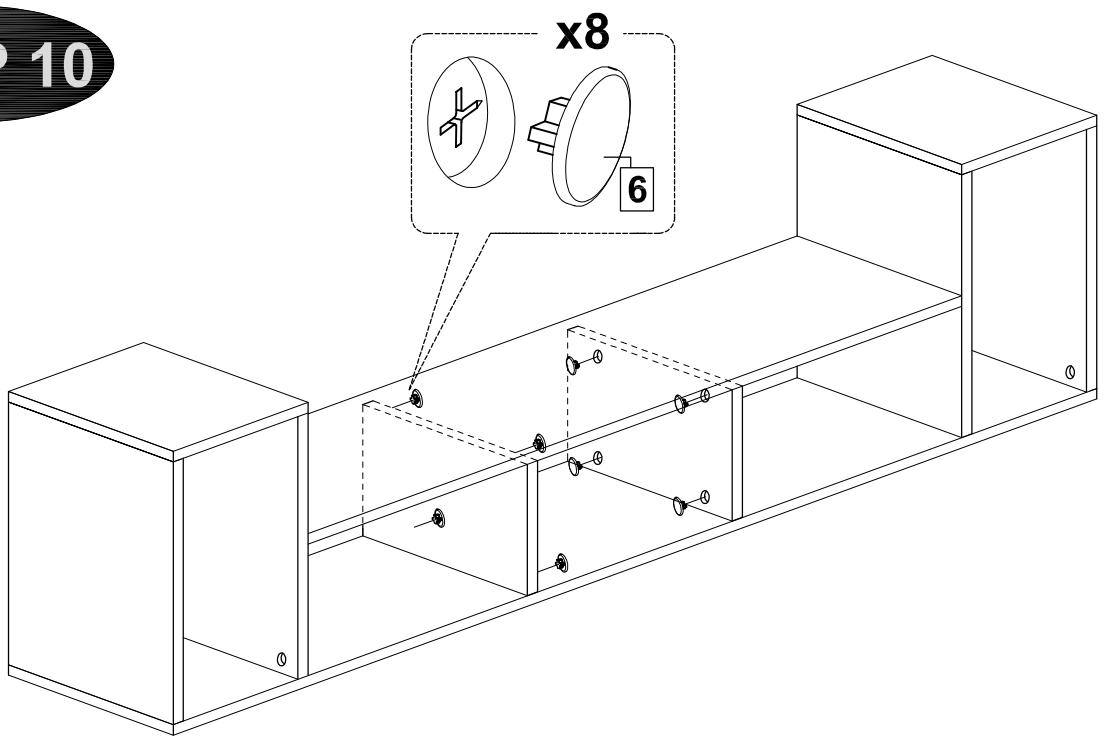
MODEL NAME:

ET 4417-00

STEP 9



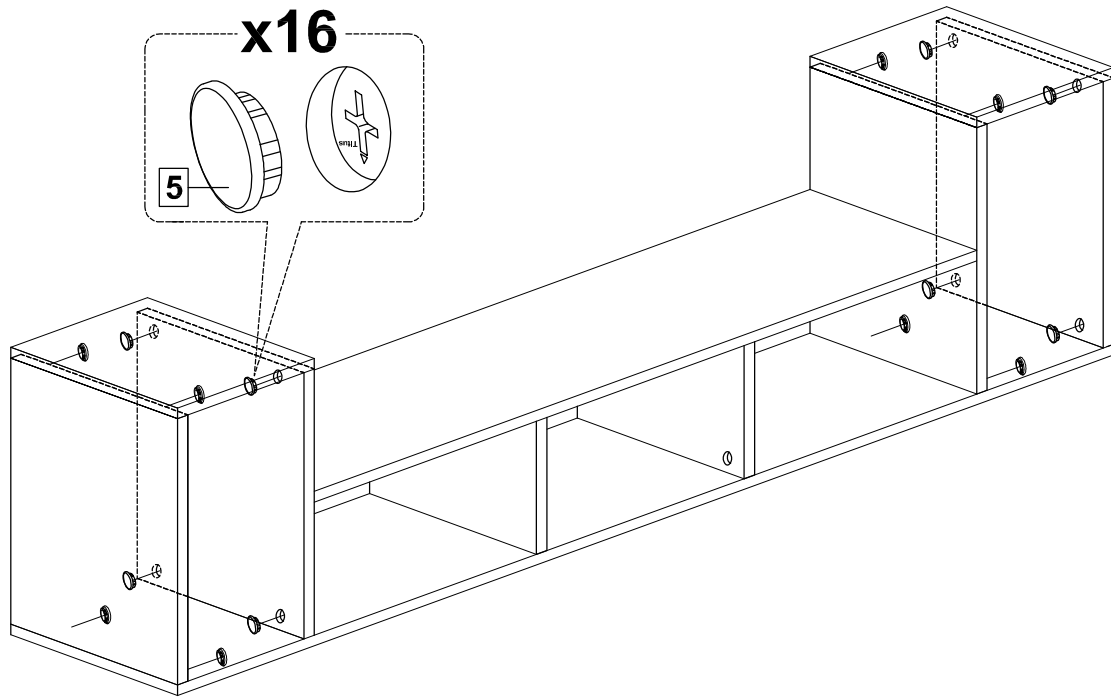
STEP 10



MODEL NAME:

ET 4417-00

STEP 11



STEP 12

